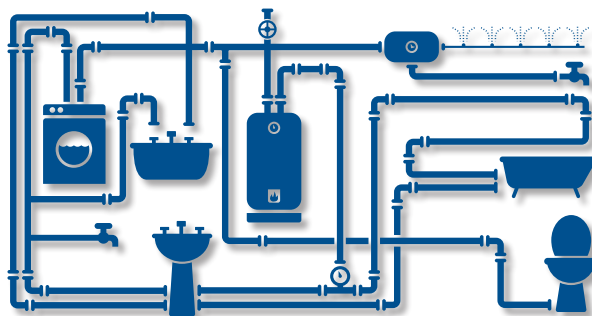


Plumbing leaks strike 1 in 12 homes each year and cost an estimated \$10 billion in property damage. The FloLogic System delivers the pinnacle of home and business security as it identifies leaks when they start and shuts them down before catastrophic damage and waste can occur. The FloLogic System with CONNECT enables app-based control and adds a temperature sensor for automatic low temp alerts and proactive shutoffs.

Typical water use has defined start and stop points. Leaks create continuous flow. FloLogic intelligently monitors virtually every ounce of water coming into a property, detects leaks as small as a half-ounce per-minute, and automatically stops them, alerting the property owner locally and remotely through the FloLogic app. FloLogic delivers premium real time detection that low-cost devices that use water meter technology cannot offer.

The FloLogic System will Detect and Stop Leaks from all Potential Points in a Plumbing Supply

- **Pipes:** Certain water chemistries speed up the eventual breakdown of plumbing materials, while installation or product defects, freezing and excessive pressure cause failures and leaks.
- **Fittings:** Bathroom, breakroom and kitchen fixtures, and appliances throughout the home or business use supply lines that can fail.
- **Appliances:** A water heater lifecycle typically ends with a leak, while washers, refrigerators and ice makers can experience multiple failure points.



Installing in Three Steps

1. Install the FloLogic System valve where the main water line enters the property
2. Connect Power and Communication
 - Uses standard 120-volt outlet plug-in
 - Connect local panel and Wi-Fi module (for optional app-based control)
3. Monitor for leaks
 - Customize programming as needed
 - Contact security technician for alarm control integration (if desired)



The FloLogic System comes in 1" (50 GPM), 1.5" (100 GPM) and 2" (200 GPM) models with: Valve Assembly, Control Panel, 12-volt Battery, AC Power Supply and Communication Cable. Wi-Fi Control Module optional.

Installation of a FloLogic System Protects Property, Gives Peace of Mind

Proven. The leader in leak detection and automatic water shutoff—made in the USA since 2000. EverWatch™ leak sensing technology detects and reports specific flow volume—beginning at a half-ounce per minute. Low-cost meter-based leak detection products can not see small leaks in real time.

Reliable. Battery backup for power outage operation. Waterproof for outdoor installation. Ball valve auto-exercise to ensure valve works when called upon.

Connected. App-based control available for IOS and Android devices. Wi-Fi module is backward-compatible with all models sold since 2005. Room temperature sensor allows proactive shutoffs in the event of heat system failure. Interfaces available for water softeners, irrigation systems, pool fill valves and reverse osmosis filters for thorough system monitoring.

FloLogic System Standard Features

- CONNECT WiFi allows app-based system oversight, control and alerts and adds a temperature sensor.
- Lead free, cast bronze construction with full-port stainless steel ball
- **Available in 1", 1.5" and 2" valves** with fittings on both ends of the Valve
- Waterproof Valve Assembly (IP68) - Allows both indoor and outdoor installations
- Listed with UL, cUL, UPC, and cUPC, Certified to NSF 61-8
- Less than 3 PSI pressure drop at 30 GPM flow. Under 5 PSI pressure drop at 50 GPM
- Maximum designed working pressure of 100 PSI
- Air Temperature 35°F (2°C) to 120°F (50°C), Water Temperature 35°F (2°C) to 140°F (60°C)
- Integrated manual override
- Capable of detecting water flow starting at ½ ounce (1 Tablespoon, 15 ml) per minute
- When AC power is interrupted, System Battery provides power for up to 7 days
- Includes security system and building automation interfaces via dry contacts as a standard feature
- 50-foot Communication Cable connects Valve and Control Panel—can be extended up to 1,000 feet
- Irrigation integration to accommodate long irrigation cycles
- Standard five-year warranty against manufacturer defects

Popular Science "Best of What's New" Award, Handy Magazine "Handy Innovation Awards" recipient, featured in the Fortune Small Business "Big Idea Issue", one of Building Products Magazine's "Top 100 Products", featured on "Ask This Old House."

Many property owners realize insurance discounts for installation. Trade and volume discounts available.

Contact us for more information and
to order your system.

www.WSSUS.com

1-888-FLOLOGIC (356-5644)





FloLogic® CONNECT Module Features and Benefits

FloLogic is the most comprehensive real time flow-based leak detection technology available for protecting property against the threat of water damage. The FloLogic CONNECT Module enables app-based control and notifications for the FloLogic System from a smart phone or tablet.



The CONNECT Module plugs in next to the FloLogic local Control Panel, communicates through the home WiFi signal and synchronizes with the free FloLogic app—available for Android and iOS devices.

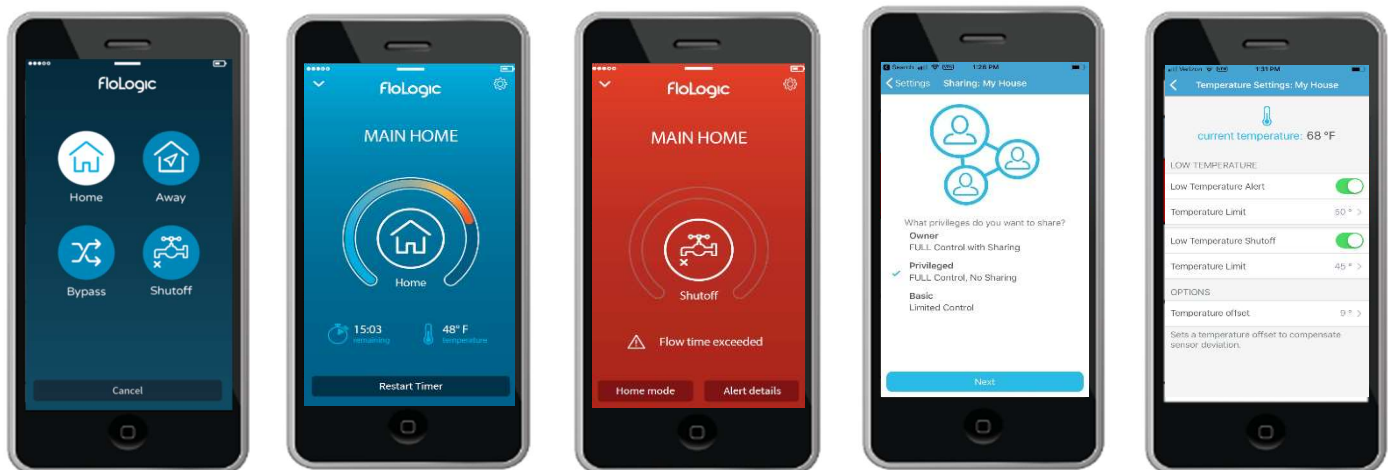
Key Functions

Controls: Change System mode, turn water off or on, from anywhere your smartphone has a mobile or WiFi signal. Adjust all System settings, which will be updated in real time with Local Control Panel. Add device access to an unlimited number of users.

Alerts: Receive push notifications of shutoff events, pre-shutoff alerts and System changes—as you elect to be notified.

Monitors: See flow in real time, check ambient room temperature and System status.

FloLogic App Screens



FloLogic CONNECT Module is compatible with all FloLogic Systems sold since

2012. Call Water Security Solutions to order (888) 356-5644 or visit

www.wssus.com

FloLogic 1-Inch Shutoff Valve



FloLogic 1.5-Inch Shutoff Valve



FloLogic 2-Inch Shutoff Valve



1" System: Length: 11", Height: 10", Depth: 4.5", Weight: 11.5 lbs.

1½" System: Length: 12", Height: 11", Depth: 4.5", Weight: 16.5 lbs.

2" System: Length: 13", Height: 12", Depth: 4.5", Weight: 25 lbs.

Ingress Protection Class: IP-68 (Submerge up to 48 Hours at 39" Deep)